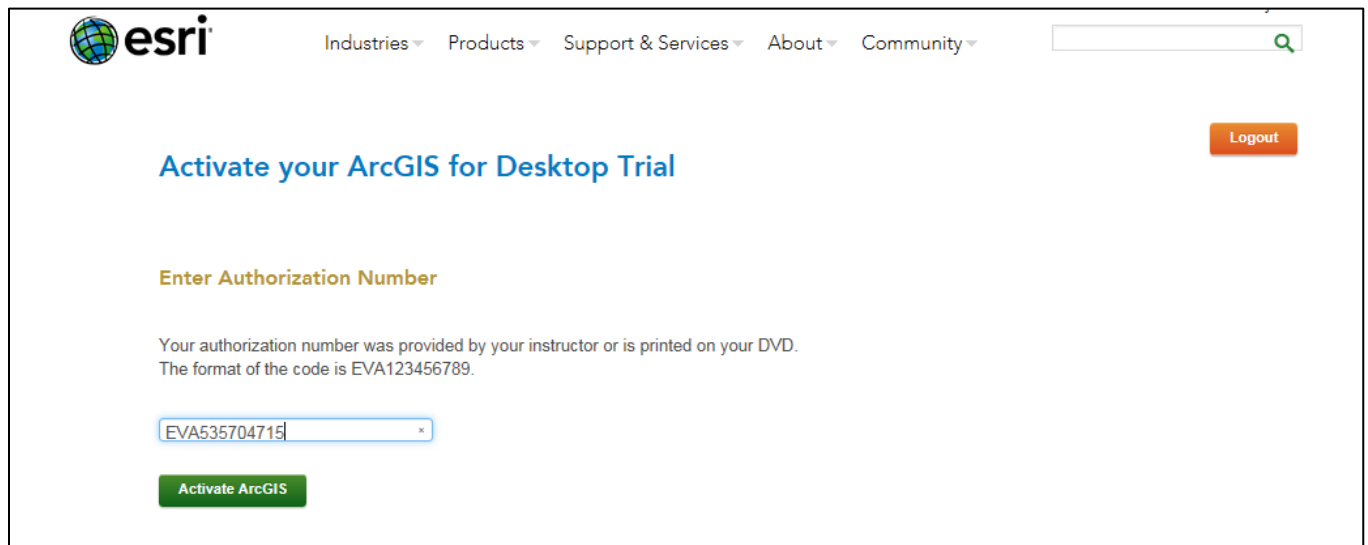



## Steps to install ArcGIS version 10.6

1. Verify your system requirements: <http://desktop.arcgis.com/en/arcmap/latest/get-started/setup/arcgis-desktop-system-requirements.htm>
2. Activate your authorization code (Each student will receive a code from the course instructor)
3. Visit [www.esri.com/StudentEdition](http://www.esri.com/StudentEdition) to begin the process of activating and downloading your ArcGIS for Desktop Student Trial software.
4. Log in using your Existing Esri Global Account, or Sign-up for a new Esri Global account, if necessary.
5. Enter the authorization code and click Activate ArcGIS.



**esri** Industries ▾ Products ▾ Support & Services ▾ About ▾ Community ▾  

**Activate your ArcGIS for Desktop Trial** Logout

**Enter Authorization Number**

Your authorization number was provided by your instructor or is printed on your DVD.  
The format of the code is EVA123456789.

**Activate ArcGIS**

## 6. Choose ArcGIS 10.6. for Desktop

### Select a Version

Select the version of ArcGIS Desktop you would like to download if you have not already received a DVD.  
If you have a DVD from your instructor, please follow the instructions in the Install Guide.  
Please see your instructor for access to ArcGIS Pro.



ArcGIS Pro 2.2 ArcGIS 10.6.1	<b>ArcGIS Pro 2.1 ArcGIS 10.6</b>	ArcGIS Pro 2.0 ArcGIS 10.5.1	ArcGIS Pro 1.3 ArcGIS 10.4.1
	ArcGIS Pro 1.1 ArcGIS 10.3.1		

7. **From the menu below download the items highlighted in yellow: ArcGIS for Desktop and ArcGIS Tutorial Data for Desktop (Optional).**
8. **Follow the steps to install as outlined in steps 2 through 4 below.** (Note: ArcGIS Desktop requires Microsoft .NET Framework 3.5 and [Microsoft Internet Explorer](#) version 7 or newer. Before running the installation program for ArcMap, ensure that your machine meets these prerequisites)

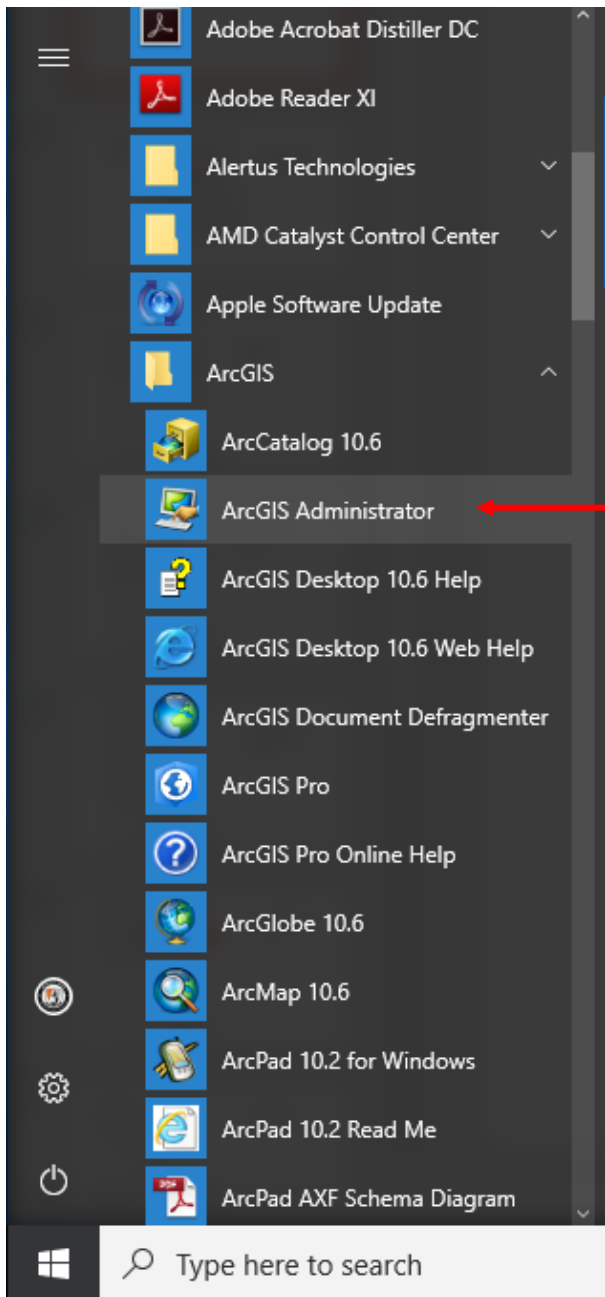
Please follow the steps below to download and install ArcGIS 10.6 for Desktop.

1. If you do not currently have an earlier version of ArcGIS installed on your machine, proceed to step 2.

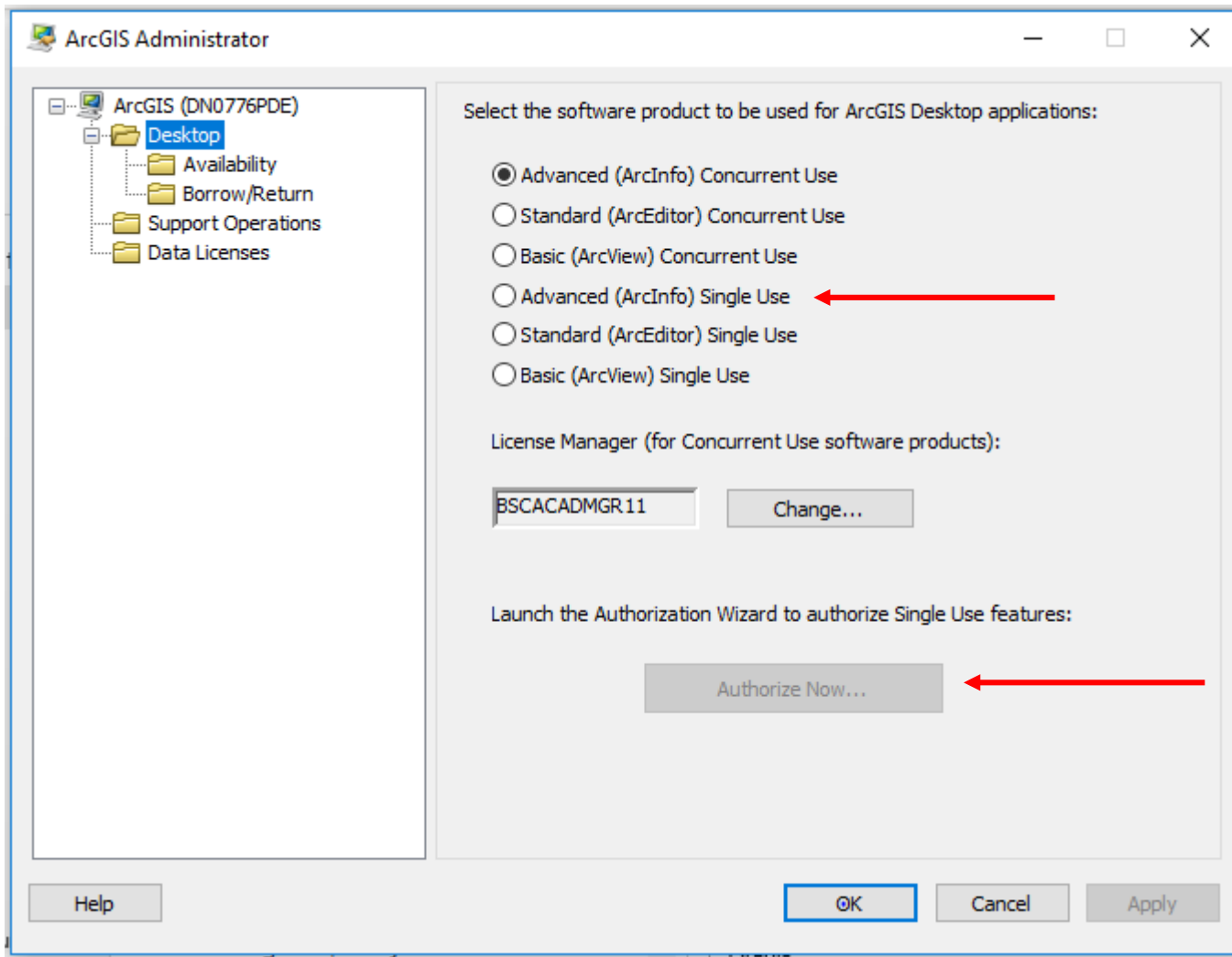
If you have ArcGIS version 10.1 or later installed, you do not need to uninstall it before installing version 10.6; the ArcGIS setup package will detect and upgrade your ArcGIS for Desktop software. If you have ArcGIS version 10.0 or earlier installed, please uninstall it using the Uninstall Utility (download below) before installing ArcGIS.

2. Download ArcGIS for Desktop, Microsoft .NET Framework 3.5, and the other files you would like to install. Please note that ArcGIS Data Interoperability, ArcGIS Data Reviewer, and ArcGIS Workflow Manager require ArcGIS for Desktop.
  - When downloading with the Esri Download Manager, you can select and download multiple products. However, only one product should be launched at a time when the downloads are complete.
  - Make sure you have write access to your download directory location as well as your ArcGIS installation directory location, and that no one is accessing it.
3. Install the Microsoft .Net Framework 3.5 Service Pack 1 below.
  - ArcGIS Pro requires [Microsoft .NET Framework 4.5](#) and [Microsoft Internet Explorer](#) version 8 or newer. Before running the installation program for ArcGIS Pro, ensure that your machine meets these prerequisites. [Quick start for ArcGIS Pro](#) provides an overview of installing and setting up ArcGIS Pro and links to detailed resources, including [system requirements](#).
  - ArcGIS Desktop/ ArcMap requires [Microsoft .NET Framework 3.5 SP1](#) and [Microsoft Internet Explorer](#) version 7 or newer. Before running the installation program for ArcMap, ensure that your machine meets these prerequisites. The [quick start guide](#) provides an overview of installing and setting up ArcMap and links to detailed resources, including [system requirements](#).
4. Install and authorize ArcGIS for Desktop
  - Select a destination folder to extract the install files to. If you choose, you can automatically launch the setup after the files have been extracted.
  - When prompted, select **ArcGIS for Desktop Advanced Single Use**.
  - When prompted, accept the default, **I do not wish to authorize any extensions** at this time. The extensions will be authorized automatically.

File Description	Documentation	Download Size	English
ArcGIS Pro	<a href="#">Quick Start Guide</a>	936.46 MB	English
ArcGIS Pro Offline Help		149.88 MB	English
ArcGIS Pro SDK for .NET		57.13 MB	English
ArcGIS Data Interoperability for Pro		608.84 MB	English
ArcGIS Pro Database Support		55.98 MB	English
ArcGIS Pro Coordinate Systems Data		1.11 GB	English
ArcGIS for Desktop (ArcMap)	<a href="#">Install Guide</a>	987.66 MB	English
ArcGIS Data Interoperability for Desktop (ArcMap)		717.29 MB	English
ArcGIS Data Reviewer for Desktop (ArcMap)	<a href="#">Install Guide</a>	60.57 MB	English
ArcGIS Workflow Manager for Desktop (ArcMap)	<a href="#">Install Guide</a>	43.38 MB	English
Database Server (Desktop)	<a href="#">Install Guide</a>	355.11 MB	English
ArcGIS Coordinate Systems Data		902.99 MB	English
ArcReader		448.02 MB	English
ArcGIS Tutorial Data for Desktop		1.65 GB	English



After you have downloaded and installed the ArcGIS Desktop software, launch the **ArcGIS Administrator** to authorize the software for use.



Click the **Advanced (ArcInfo) Single Use** radial button

Click **Authorize Now**

Software Authorization Wizard

**Authorization Options**  
You must authorize the software prior to use. Select from the options below.

Authorization Options

I have installed my software and need to authorize it. ←

I have already authorized the software and need to authorize additional extensions.

I have received an authorization file and am now ready to finish the authorization process.

< Back   Next >    ←

Click “I have installed my software and need to authorize it”

Click **Next**

Software Authorization Wizard

**Authorization Method**  
Select the method you want to use to authorize the software.

Authorize with Esri now using the Internet.  
(This automatic method is the easiest way to authorize. It requires an Internet connection.)

Authorize at Esri's website or by email to receive your authorization file.

Authorize your software from a local license server.

< Back   Next >   Cancel

Click "Authorize with ESRI now using the Internet"

Click Next

Software Authorization Wizard ✕

**Authorization Information**  
We will use the following information to verify our records and authorize your use of the software. (\* required field)

*First Name:	<input type="text"/>
*Last Name:	<input type="text"/>
*Organization:	Buffalo State College
Department:	Geography and Planning
*Address 1:	1300 Elmwood Ave
Address 2:	<input type="text"/>
*City:	Buffalo
*State/Province:	NY
*Zip/Postal Code:	14222
*Location:	United States <span>▾</span>
*Phone Number:	716-878-3699
*Email:	<input type="text"/>
Comment:	<input type="text"/>

Optional user-defined authorization description.

< Back Next > Cancel

Fill out the form as shown in the image. Use your first and last name and Buffalo State email address

Click **Next**



Software Authorization Wizard

**Authorization information (continued)**  
We will use the following information to verify our records and authorize your use of the software. (\* required field)

\*Your Organization: Education-Student

\*Your Industry: Higher Education

\*Yourself: Student

The personal information you supplied is protected under Esri's privacy policy. If you want to view Esri's privacy policy, click the View button below.

View...

< Back Next > Cancel

Choose the options as shown from the drop down menus.

Click **Next**

Software Authorization Wizard

**Software Authorization Number**  
Enter the authorization number for your software product.

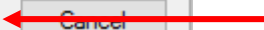
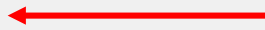
The authorization number consists of three letters and a series of numbers; similar to ABC123456789.

ArcGIS Desktop Advanced (Single Use)

< Back   Next >   Cancel

Type in the EVA code that I sent to you in the email

Click **Next**



Software Authorization Wizard

**Authorize Software Extensions**  
Please select an option below.

Options

I do not want to authorize any extensions at this time. ←

I have authorization number(s) to authorize one or more extensions.

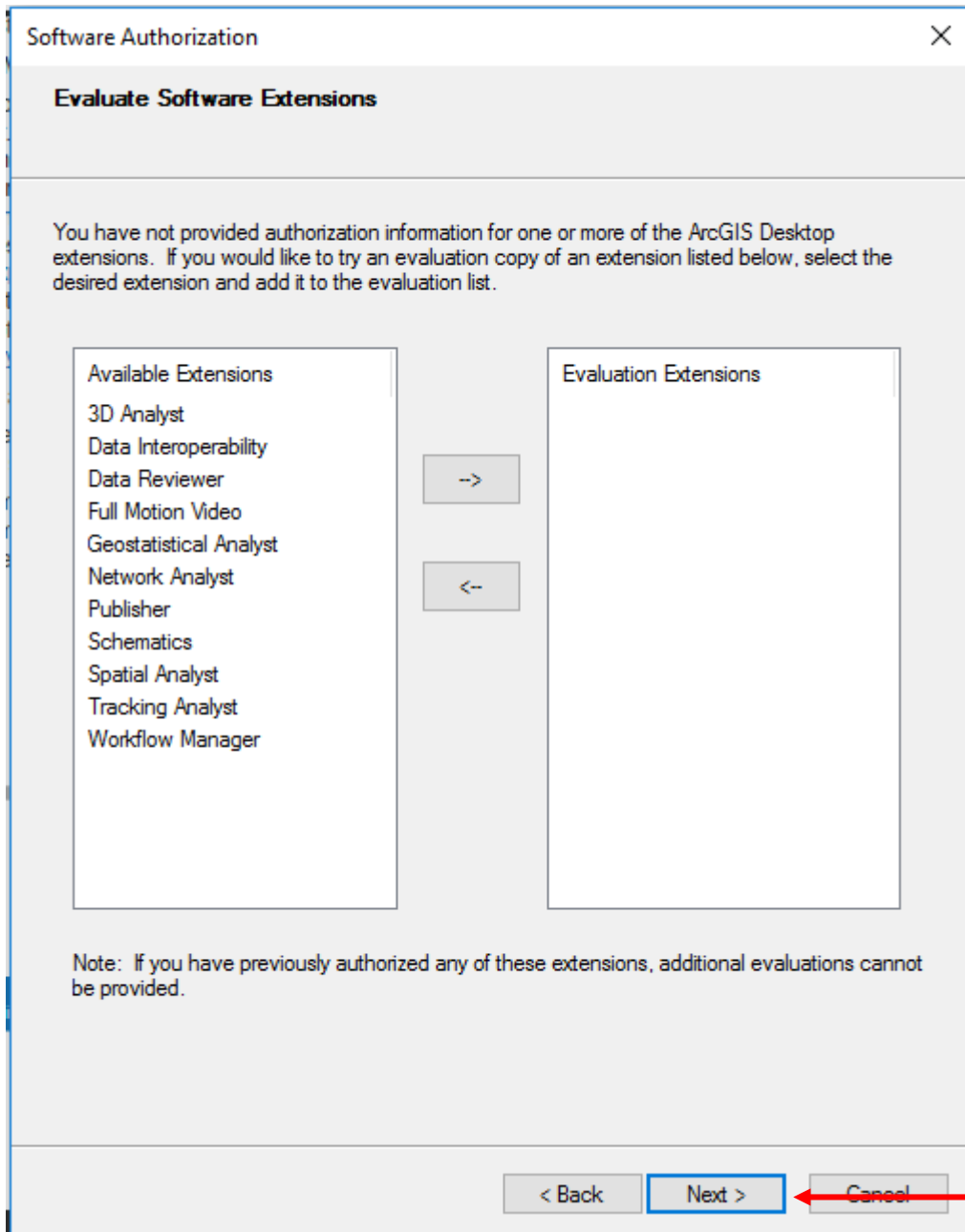
Extensions

Feature	Authorization Number
3D Analyst	
Spatial Analyst	
Network Analyst	
Publisher	
Data Interoperability	
Geostatistical Analyst	
Tracking Analyst	
Schematics	
Full Motion Video	
Workflow Manager	
Data Reviewer	

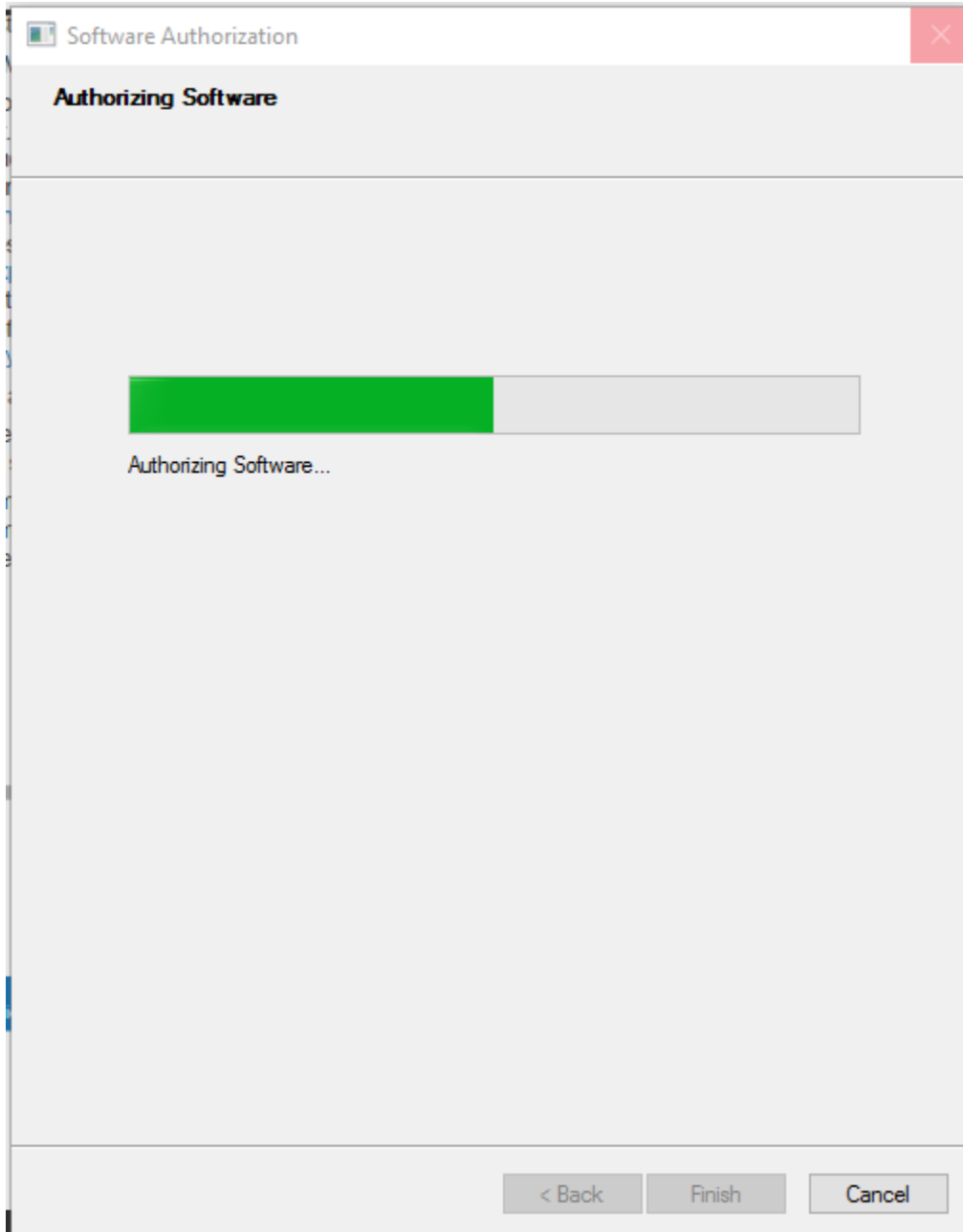
< Back   **Next >**   Cancel ←

Choose “I do not want to authorize any extension at this time”

Click **Next**



Click **Next**



The software should begin to authorize. When the green bar is completed, click **Finish**

Your software is now ready to use!